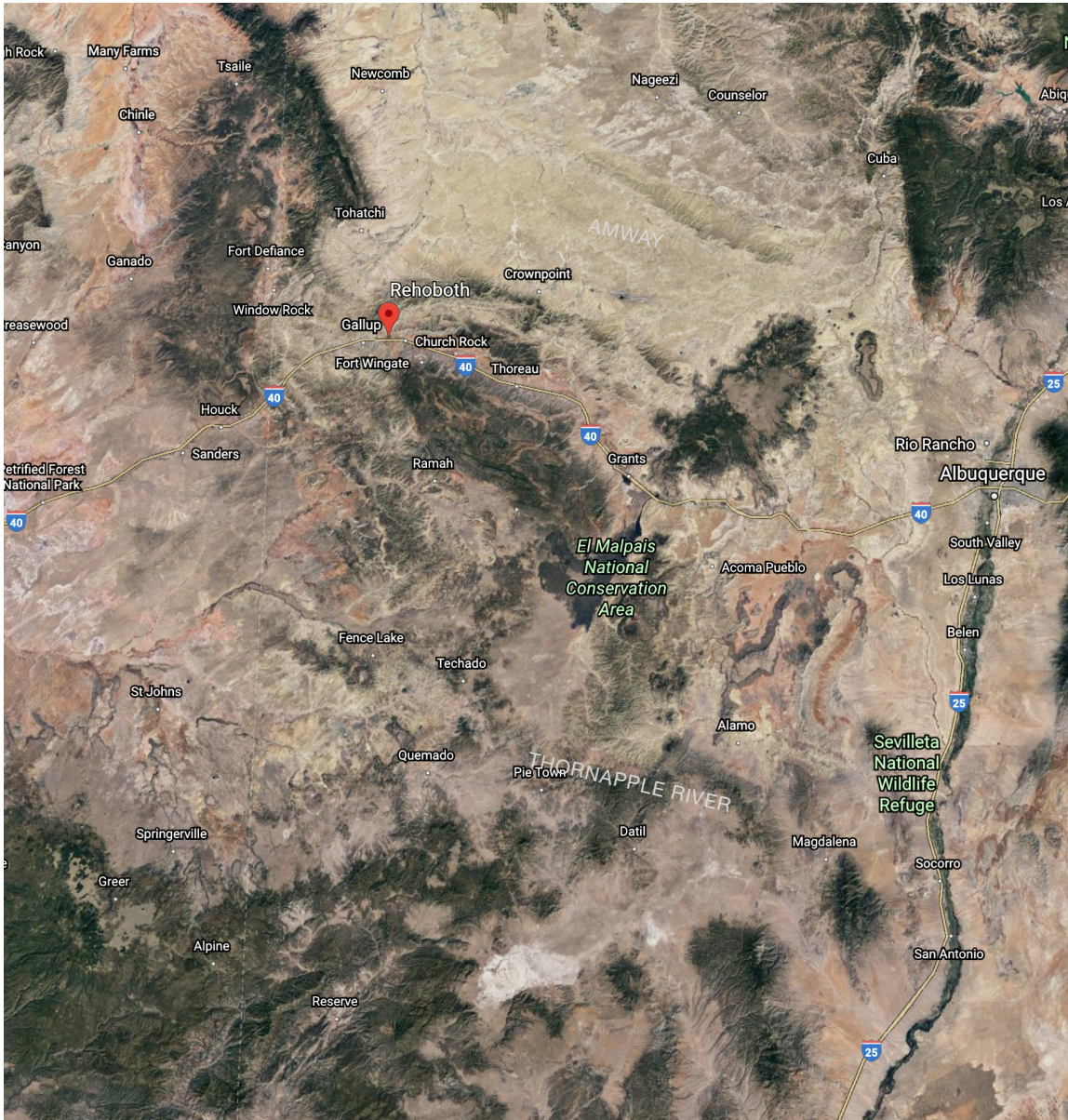




## Available Rehoboth Land Rehoboth, NM 87301



## EXCITING NEW OPPORTUNITY

Join other highway interchange retailers at Exit 26 with visibility on I-40 and frontage on US Rte 66. Sizes ranging from 1.3 Acres to 6 Acres. Exit 26 is the easternmost interchange to access Gallup, providing access to Route 66/NM 118.

Gallup, New Mexico, is located in McKinley County in the northwest sector of the State of New Mexico. It is mostly surrounded by the Navajo Indian Reservation. Because portions of the Navajo and Zuni reservations are located within the County, more than 60% of the land is Indian-owned. Gallup is the County Seat of McKinley County

McKinley County is the sixth largest county in the State of New Mexico. Population statistics specific to Gallup fail to paint the entire picture, as on any given weekend the population more than doubles as residents of one of the world's largest Indian reservations pour into town to shop, eat, and refuel before returning home. On the 1st and 15th of each month (federal and tribal paydays), the population can reach as high as 80,000 people.

**m<sup>®</sup> retail**

[www.mretail.com](http://www.mretail.com)

Chris Muller  
(616) 881-2888



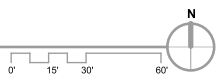


# Available Rehoboth Land



## 1. Site Plan

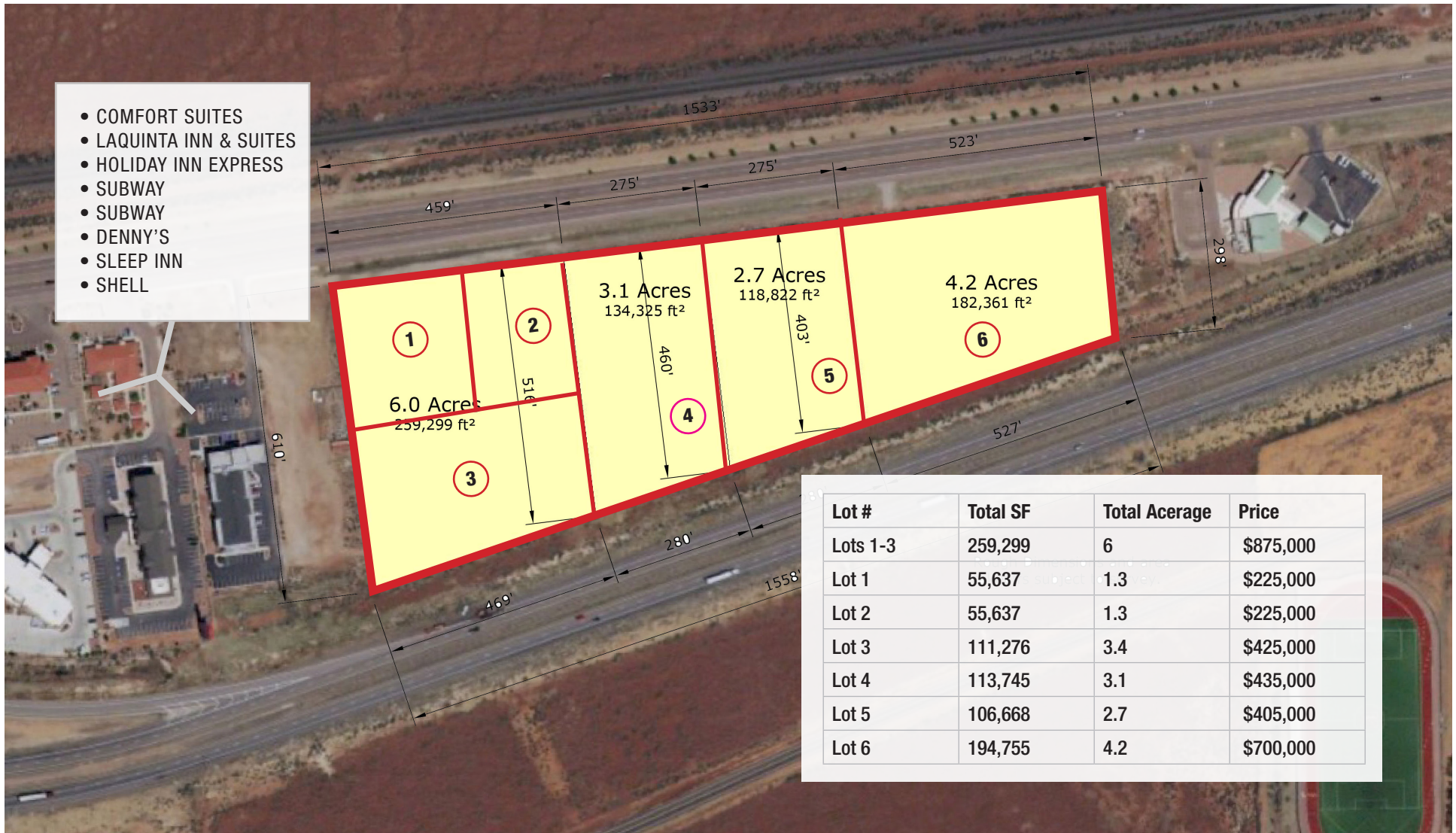
SCALE: 1" = 30'-0"







## Available Rehoboth Land



### 1. Site Plan

SCALE: 1" = 30'-0"

