

**2020-2021**  
**Back To School**  
**Information Packet**



# Table of Contents

---

- I. [Welcome Letter & Updates](#)
- II. [Family Orientation Week](#)
- III. [COVID procedures](#)
- IV. [Elementary School](#)
  - A. Welcome Letter
  - B. Rehoboth Creed
  - C. [Supply Lists \(K-5th\)](#)
- V. [Middle School](#)
  - A. Welcome Letter
  - B. [Supply Lists \(6th-8th\)](#)
- VI. [High School](#)
  - A. Welcome Letter
  - B. [General Supply List](#)
  - C. Dress Code
- VII. [Athletics](#)
- VIII. [Student Support Services](#)
- IX. [Parent Volunteer Program](#)
- X. [Transportation](#)
- XI. [Food Service-Cafeteria](#)
- XII. [School Nurse](#)
- XIII. [School Communication](#)
- XIV. [Tuition Information & FACTS](#)
  - A. Tuition Policy
  - B. How to Sign up for FACTS
  - C. Tuition Assistance application
- XV. [Introduction to School Board](#)
- XVI. [Biography of New Staff](#)
- XVII. [Important Numbers & Contact information](#)
- XVIII. [Parent Back-To-School check-off list](#)

# Welcome to the 2020-2021 School Year

---

My name is Bob Ippel and I am the Executive Director of Rehoboth Christian School. We are so thankful that you will be part of the Rehoboth School family during this unique time in Rehoboth's 118-year history. We are humbled that you would choose Rehoboth during such a time of uncertainty. Probably no other semester has started with such apprehension and concern from parents, students and staff. Probably no other school year has begun with such a great desire to connect with others after months of separation. We want to say, "Welcome!" We think you made a great choice, and we are thrilled to start the school year. A table is being prepared for you!

Months before the pandemic dominated our lives the staff was looking at a theme for the 2020-21 school year. The theme of "Preparing a Table" based on Romans 15:7 was chosen.

*"Therefore welcome one another as Christ has welcomed you, for the glory of God."*

As we have all been accepted by the unconditional love of Jesus Christ, we want to welcome each other to be part of the family where we can celebrate with each other the joys of life and cry with each other when confronted with sorrow. We are committed to each other as staff, students and parents as we do school during this crazy time. Welcome!

In our family, the table has always been an important gathering place. This is where we would all gather for at least one meal a day. We would connect—hearing the happies and crappies of the day. We would laugh a lot and sometimes cry. We would often hear God's Word. Staying connected is such an important part of a healthy family. Each supper, we would experience the nourishment of the food and the fellowship of the family. It is no coincidence that the table plays such an important role in the Bible and that we are reminded that God prepares a table for us. Welcome!

As a family we try to encourage each other and share with each other. I want to thank you so much for the encouragement we have received as we have tried to figure out how to move forward. Everyone understands the challenge that faces the Rehoboth School Board and Administration as decisions are made, and we thank both the staff and the parents for their feedback in terms of how to proceed.

The reality is that we have family members "coming to the table" who have experienced mighty challenges in these months. Some of our staff and families have experienced the illness, sadness, and heart wrenching stories that have come from COVID-19. Some families come with a job loss. We have prayed for many of you these last months. Others have shared about the emotional devastation in their families as students have missed out on a huge part of who they are created to be—social creatures. It is clear that there are a swirl of conflicting emotions within our school community as we enter a new school year. Staff love their calling—the interacting, relationship-building, and mentoring with students. And they also fear for their families and loved ones. Families and students understand the need for human interaction in the educational process, and they too fear for *their* family and loved ones.

How do we prepare the table for a family with such a variety of needs and concerns?

The beauty of Rehoboth Christian School is that we are blessed to be a smaller school with an incredibly dedicated, licensed professional staff and amazing facilities that can allow us to be flexible in how we offer Christian education. It was clear from our most recent survey that 43% of you would like to have your students learn online. 57% of you want to have your children on campus as part of their educational experience. It is clear from our staff survey that some of our staff will not be able to start the year with students because of their health or family situations. Others are ready to be with students in the same room. We believe that our Fall 2020-21 Education Plan will help us in supporting all who are “at the table.” Students will be able to do online or hybrid classes which are designed to keep class sizes small. If enough families choose online only we may be able to have students here four days per week for in class instruction because classes would be small enough to be conducted safely.

In conclusion, I again want to say, Welcome! Pray for us as we prepare the table of Christian community and education at Rehoboth Christian School. We pray for you as you prepare to join us for the 2020-21 school year. I am thankful to be representing an amazing school board and staff.

Mr. Bob Ippel  
Executive Director  
Rehoboth Christian School  
[bippel@rcsnm.org](mailto:bippel@rcsnm.org)  
505-726-9623

# Family Orientation Week

---

## August 17-21

August 2020				
Monday	Tuesday	Wednesday	Thursday	Friday
<b>17</b>	<b>18</b>	<b>19</b>	<b>20</b>	<b>21</b>

- Each family will be assigned a time slot during which the parent/guardian and child(ren) will be able to come on campus, meet their teacher(s), be sure their laptop/computer is set up for their classes, confirm meal and transportation needs and more.
- Because of our desire to be careful, we ask that only enrolled Rehoboth students come to this event with you.
- We will not be having child care for younger children.
- We will have a sack lunch for each of you and even a scavenger hunt as you drive on campus!

**First day of Instruction begins Mon. Aug. 24.**  
**We will begin ONLINE for 3 weeks.**

August 2020				
Monday	Tuesday	Wednesday	Thursday	Friday
<b><u>24</u></b> School Begins for K-High School online for 3 weeks	<b>25</b>	<b>26</b>	<b>24</b>	<b>28</b>

# COVID Procedures

---

Please know that while nothing is risk free we are looking to the health professionals for guidelines and recommendations in order to best keep our staff and students safe as we begin the school year. Unless new guidelines are issued by the CDC, the New Mexico Department of Health or the Navajo Nation Department of Health, we will follow the protocols listed in this document. Please remember that while there is a lot we do not know about this coronavirus, we do know that the spread through the air is the most clearly documented. There are practices we can adopt to help ensure the safety of our students and staff. Please also know that we will not go with the hybrid model of having students on campus unless this idea is supported by the Department of Health AND that our staff feels that protocols are in place to continue safely.

## **Commitment to Stay Home if symptomatic for COVID or Unexplained Symptoms**

Staff and students will work from home if they have a fever above 100.3 or are experiencing shortness of breath or a cough. If they have other unexplained symptoms, they should also stay home. Parents know their children and what is normal or not normal. We are relying on you to do daily home screenings to help you decide if your child should be in school or not.

## **Daily Screenings at Home**

Staff and students will be screened each day by having temperatures taken when they get to school or get on a bus. They must not be over 99.5 which is more conservative than the CDC guidelines. Parents and staff are asked to take their temperature at home if possible and should all use the at home screening checklist before students or staff go on a school bus or in a school building. [Here is a CDC Homescreening guide](#). It is important that families have a thermometer so they can assess their family health at home.

## **Protective Gear**

Staff and students are required to wear masks at all times unless they are eating or otherwise directed by staff. This is the most important practice that will keep our students and staff safe.

## **Handwashing**

Students and staff will be required to sanitize their hands upon entering any building. They will also be required to continue this practice at various points during the day. Hand sanitizing stations will be in each classroom and outside of each classroom.

## **Physical Distancing**

When possible classrooms will be set up so that students/staff will be positioned 6 feet away from each other. When students will be working with a partner or in groups together, staff will be conscious of the safest way to implement this in an educational setting.

## **Cleaning and Sanitization**

Buildings will be cleaned throughout the day with focus on high use areas. Teachers will also monitor the sanitization schedule of their classrooms. If hybrid instruction is taking place, schools will receive a more thorough disinfecting on the weekend (before Hybrid Group A) comes on Monday and on Wednesdays (before Hybrid Group B comes on Thursday). [CDC Guidelines for Cleaning and Disinfecting](#) will be followed.

## **No Visitors**

Unfortunately parents and visitors will normally not be allowed into the educational buildings unless they are involved in instruction. Visits to the Administration Building will be allowed after visitors have their temperature taken. Parents will need to be in contact with their building Administrative Assistants regarding the need to drop something off or pick up something during the school day.

## **Exposure to Someone with Symptoms of COVID or who has tested Positive for the Virus**

Exposure can vary in terms of factors such as time spent with someone, the space where the exposure occurred and what mitigation protocols were being followed (masks, physical distancing...) These factors will assist the school and local health officials to decide on appropriate steps to be taken.

Typically when a staff member or student has been exposed to someone who has tested positive for the virus or has obvious symptoms of the virus, they should self quarantine and may be tested. Staff may return to school after they have a negative test result. Students may return after 7 days of showing no symptoms of COVID or if they have received a negative test if testing was administered.

## **Sharing Information**

Any staff or students who were exposed to someone who has tested positive for the virus will be notified. Depending on the nature of the exposure, a class or a school building (elementary, middle, high) may be closed for 24 hours for disinfecting procedures. Staff and students who have been exposed may be advised to stay home for 5 days to be sure no symptoms develop and/or to get tested for infection. Students and staff who are in self isolation will continue their school responsibilities online.

## **Transportation**

Drivers will wear masks and provide protection with a plexiglass or plastic surrounding. Students will have their temperatures taken before they get on the school bus by the bus driver. Students must wear masks on the bus and be in their assigned seats. Efforts will be made to provide social distancing.

## **Food Service**

The Food Service will be providing cold meals to begin the school year. These meals will be distributed to students at their bus stops twice per week or in their classrooms if students end up on campus. There will be no microwave available for student use during the school day. More information will be shared at the "Welcome Back to School" orientation.

## **Commitment to Being a Family**

We are all one family. Therefore it is important that staff and students are following the recommendations of the medical professions outside of the school setting in order to keep students and staff safe inside the school setting. It is also important that the school is honest with families about what

is happening in terms of exposures at school and that staff and families are honest with the school if they know that family members are symptomatic or had tested positive for this virus.

Equally important is the need to be loving and supportive of one another. Testing positive is nothing of which we need to be ashamed. We know that there is community spread and many things unknown about the virus. Sometimes it is easy to become judgemental when it comes to this virus. When people are sick, they need love and support. Thankfully, many who test positive are asymptomatic. Let's support each other.

**Please Click Below for Further Resources**

[Frequently Asked Questions - John Hopkins](#)



# Elementary School

**Elementary Handbook:**

<https://www.rcsnm.org/admissions/schools/elementary-school.cfm>

# Parents of RCS Elementary Students

---

Welcome to the 2020-2021 school year at Rehoboth Christian Elementary School! I hope that you've had a chance to rest, relax and rejuvenate for the upcoming school year. My name is Peter Ippel and this will be my third year as the elementary and middle school principal at Rehoboth. I attended Rehoboth from 4th-12th grade and spent 11 years teaching in public schools prior to coming back to Rehoboth as the principal. We are blessed to have most of our staff members returning this year! We do have a few new staff members to introduce. We welcome three new staff members in our PreK program: Elsa Doornbos (Early PreK Lead teacher), Darren Yazzie (Early PreK Assistant), and Sara Bingley (PreK lead teacher). Jamie Frederiksen joins us in the Elementary Title 1 reading position. We also have two new K-8 staff: Daniel Ensign (K-8 Counselor) and Abbie Huizinga (K-8 Special Education). Praise God for the provision of new and returning staff members who come to prepare a place at the table for your children.

Though this year is dramatically different in terms of how school will look, what doesn't change is our commitment to help every child develop their gifts and reflect God's image more brightly and more clearly. Whether your child is learning online or at school, we want them to learn and grow! In your survey comments, it is clear that many of you are praying for wisdom, discernment, safety and so much more. We thank you for that. The comforting thing is that no matter what challenges we face, we know who is supporting us and guiding us--our mighty God.

This year our school theme is "Preparing a Table". Our theme verse comes from Romans 15:7 (ESV): "Therefore welcome one another as Christ has welcomed you, for the glory of God." Rehoboth has always been about community and welcome. This year, welcoming is our focus which may seem opposite of what's possible during a pandemic. Whether you are learning at school or at home, it is our prayer that you feel the warming glow of Christ's welcome. Our table of fellowship is prepared for you. And may we all remember why we seek this--for the glory of God!

Normally in this space, I highlight some important dates for the beginning of the year, but this is more complicated this year. Orientation will take place over the week of August 17-21. You will have an assigned day and time. In addition, school will begin entirely online for at least 3 weeks, beginning August 24.

If you have any questions or concerns, feel free to contact your child's teacher or me!

**Once again, welcome to a new school year and we are excited to see you and your child soon.**

Sincerely,  
Peter Ippel, Elementary and Middle School Principal  
Rehoboth Christian School  
(505) 726-9605

# Rehoboth Creed

---

We go to Rehoboth, a Christian school.

We believe in God the Father, God the Son and God the Holy Spirit. We believe the Bible is God's Holy Word which is completely true. It is a lamp to our feet and a light to our path. (Psalm 119:105)

God created me in His own image, and He loves me beyond my imagination (Psalm 139). He calls me by name (John 10:3). He wrote my name on the palms of His hands (Isaiah 49:16)!

At our school we are each different, but we are one in Jesus. We respect each other and honor the gifts that God has given each of us.

At Rehoboth we learn that every inch of our world belongs to God! Every subject is His. I will work hard to learn and grow in knowledge and in wisdom.

I will follow Jesus Christ and listen to His voice. He calls me to use words of kindness, to respect God's creation and all authority, and to encourage and serve the people around me.

"We will be called oaks of righteousness, a planting of the Lord for the display of His splendor." (Isaiah 61:3)

---

# BACK TO SCHOOL in 2020



Dear Kindergarten Families,

As we think about this upcoming school year it is certainly different than any other year. We are making plans and yet we need to be flexible depending on the virus situation. During this changeable, uncertain time some things remain constant:

God is God	God is with us
God knows us	God loves us and
God will not leave us.	

I am eager to meet all of you and begin our partnership together. No matter if we are doing school online or in person we will develop/build a relationship which will benefit all the aspects of your child's education.

Kindergarten usually begins with Home Visits but this year we will join the schedule for the "Welcome Back to School" week August 17-21. Your family will be assigned a time slot during which you and your child(ren) will be able to come on campus and meet with myself as your child's Kindergarten teacher. We will set up a laptop/computer for Kindergarten learning activities and discuss concerns, questions, expectations, fears, joys and ideas.

During your time on campus you will also meet with other staff members to set up transportation, meals and any other items you may need.

\*\*\*These meetings are foundational to the rest of the school year. The information we share will help lessen the stress for all of us during these uncertain times. It is essential for all of us to attend these meetings. Thank you for taking the time to begin the school year together.

The **school supply items** on the back of this note will be used in school or at home with the online activities. You may want to take advantage of the New Mexico tax free weekend, August 8 and 9.

Feel free to email me if you have any questions prior to your scheduled meeting time.  
lgillson@rcsnm.org

In the light of God's love,  
Leanne Gillson



Rehoboth Christian School  
**Kindergarten** Students' Supply List

**Please write your name on these items:**

1. Crayons (24 pack is fine) **name on the box is fine**
2. Wide Markers (**name on each marker please**)
3. Scissors
4. Pencil box – **Not needed due to Walmart donation**
5. Small pillow
6. Inside shoes or slippers for muddy days.
7. Extra clothes in case of an accident  
\*\*\*Put in a bag labeled with name
8. No pencils needed- we have LOTS
9. Glue sticks (Not needed we have plenty)
10. Disinfectant wipes
11. Kleenex (1 box)

**Other items needed:**

\* A **back pack** big enough to hold a regular folder. The school will provide a folder for the students' daily papers.

\* A **water bottle** labeled with name

# 2020/2021 First Grade School Supplies

## Welcome 1st graders!

Below are some items that your child will use throughout the school year.

- **1 package of Ticonderoga pencils (10 count or more)-** Ticonderoga pencils are a good brand. Please no pencils with pictures around them. These pencils don't sharpen well and are constantly breaking at the tips
- **1 Pencil Pouch-** These are more versatile than a box and will fit nicely in our chairbags and cubbies.
- **2 packages of the 10 pack Crayola markers-** normal size
- **2 packages of the 24 pack Crayola crayons**
- **1 package of glue sticks-** Elmer's glue is a good brand. They don't dry out as easily.
- **2 plastic folders with sturdy pockets-** Plastic is best. These will be used very frequently.
- **A pair of scissors-** standard, children's size
- **1 Composition notebooks-** Not the spiral wire bound, but the kind with the black tight binding.
- **2 boxes of Kleenex-** two is good, but more if you are able to
- **1 Container of Clorox wipes**
- **1 Bottle of Hand Sanitizer**
- **1 package of colored Expo dry erase markers-** you may choose between the standard size or fine point. You may also choose other colors besides the red, black, blue, green package. More colors help us distinguish different things.
- **A backpack**
- **A Face Mask/Covering**



Thank you for purchasing these items. I know it can get pricey, but these items will be useful for us in different ways. Look forward to meeting you all!

Ms. Clarissa Johnson, First Grade Teacher

# To 2020/2021 Second Grade Parents:

I pray that you are enjoying the summer time. I am already looking forward to the first day of school and teaching your child! It's July already! Soon we will all be watching for those back-to-school sales, wondering what the teacher wants your child to bring to class on that first day. Well, here it is! A complete list of the items that I feel your child needs for grade two. I look forward to meeting your family on back-to-school night!

Sincerely,  
Mrs. Lorrinda Horace, [lhorace@rcsnm.org](mailto:lhorace@rcsnm.org)



## School Supplies for Second Grade

- ❑ 1 sturdy plastic orange folder with pockets and prongs for Homework papers and notes. *I'd like the folder to be orange, since it makes it easier to spot a wayward folder lying in the hallway, on the bus, or on the playground easily. It also helps our Daily Dose parent volunteers who assemble our folders daily - each grade has a specific color.*

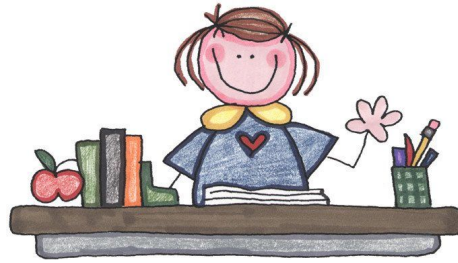
*Please write your child's name or initials on all school items.*

- |  |  |
|--|--|
| <ul style="list-style-type: none"><li>❑ 1 Composition Journal book with your choice of cover-or decorate it!</li><li>❑ 2 Boxes of Kleenex</li><li>❑ 1 Large glue stick or bottle of glue</li><li>❑ 1 pair of child scissors</li><li>❑ 1 box of markers</li><li>❑ 1 box of crayons</li><li>❑ 1 large eraser</li><li>❑ 1 package of pencils</li><li>❑ Try to get quality pencils; it's not fun to have the tip break on you all the time.</li><li>❑ 1 highlighter</li><li>❑ 1 4-pack of Expo markers - We will do a ton of small group work in Math rotations, Literacy circle and</li></ul> | <ul style="list-style-type: none"><li>math games using our mini whiteboards!</li><li>❑ 1 12" non-folding ruler that has both the U.S standard measurements as well as the metric measurements</li><li>❑ 2 spiral 1 subject notebooks - (will be used for FAST spelling and interactive math notebook)</li><li>❑ 1 pkg of antibacterial wipes - these are so helpful throughout the school year, especially during flu season!</li><li>❑ 1 box of either sandwich size or gallon size ziplock baggies</li></ul> |
|--|--|

Optional: a set of headphones to be used in our listening center or on the ipads.

Also, that extra pair of slippers from home which will be stored at school for those muddy and wet mornings when we leave our shoes out in the hallway.

# Welcome to 3rd Grade!



Dear Parents and Families,

My name is Miss Becca Hibbler and I will be your student's 3rd grade teacher this year at Rehoboth. I hope everyone has been having a wonderful summer and is eager to start back up in the new school year very soon!

A little about me, I am embarking on my seventh year of teaching at Rehoboth. I had a wonderful time in 3rd grade last year and am looking forward to another great year of excitement, discovering, and learning together. I am originally from Michigan, but have fallen in love with the New Mexico mountains, sunshine, and people! I love hiking, running, mountain biking, exploring, and just relaxing with friends.

Some highlights to look forward to this year will be learning about communities, multiplication, exploring science through experiments, learning how to become authors, and so much more! I am looking forward to meeting and working together with each of you this year in 3rd grade.

Blessings,  
Miss Becca Hibbler



# 3<sup>rd</sup> Grade School Supply List

## **Things you MUST have for Our Classroom Supply:**

**\*\*we will share these items as a class-they will NOT be kept as individual student items\*\***

- 1 box of Kleenex tissue (or other brand)
- 2 Containers of Clorox Wipes
- 1 Pump Container of Hand Sanitizer
- 4 glue sticks (glue sticks only please!)
- a pair of scissors
- 3 packages of regular #2 pencils (no pencils with plastic coatings-they break the pencil sharpener!)
- a package of sticky notes

## **Things you MUST have for your Own Supply:**

**\*\*These items will be individual student items\*\***

- four or more dry-erase markers
- an old sock or other cloth for a personal eraser
- 3 3prong folders (preferably not paper, but strong plastic)
- 2 2 pocket folders (preferably not paper, but strong plastic)
- 1 spiral bound notebook (1 subject please)
- 1 1inch binder- no zipper closure
- a zipper pouch or small pencil box
- 1 composition notebook
- a pair of headphones
- markers, crayons, or colored pencils, etc (No permanent Sharpies please)

## **Things that you may want to get, but are *optional*:**

- an extra eraser
- personal pencil sharpener
- donations of extra #2 pencils
- donations of extra crayons, markers, or dry erase markers for class supply



# 4th/5th Grade

## Rehoboth Christian School

It will be helpful if your child labels as many items as possible.

- ☐ Pencils, lead or mechanical (extra lead if using mechanical)
- ☐ Pointed scissors
- ☐ Box of colored pencils
- ☐ Box of markers - either thin or fat or both
- ☐ Glue (4-5 glue sticks preferably)
- ☐ 3 spiral notebooks
- ☐ 1 composition book
- ☐ 3" 3-ring binder (preferably one that zips shut)
- ☐ Supplies pouch to fit in binder
- ☐ Lined paper (1 ream to add to class stash)
- ☐ 2 boxes of tissues
- ☐ 1 - 2 containers of Clorox wipes
- ☐ Package of 5 subject dividers WITH POCKETS
- ☐ 4 or more colored pens (no black)
- ☐ Earbuds/headphones to keep at school

# Middle School

**Middle School Handbook:**

<https://www.rcsnm.org/admissions/schools/middle-school.cfm>

[Table of Contents](#)

# Parents of RCS Middle School Students

---

Welcome to the 2020-2021 school year at Rehoboth Christian Elementary School! I hope that you've had a chance to rest, relax and rejuvenate for the upcoming school year. My name is Peter Ippel and this will be my third year as the elementary and middle school principal at Rehoboth. I attended Rehoboth from 4th-12th grade and spent 11 years teaching in public schools prior to coming back to Rehoboth as the principal. We are blessed to have most of our staff members returning this year! We do have a few new staff members to introduce. We have two new K-8 staff: Daniel Ensign (K-8 Counselor) and Abbie Huizinga (K-8 Special Education). Praise God for the provision of new and returning staff members who come to prepare a place at the table for your children.

Though this year is dramatically different in terms of how school will look, what doesn't change is our commitment to help every child unwrap their gifts and reflect God's image more brightly and more clearly. Whether your child is learning online or at school, we want them to learn and grow! In your survey comments, it is clear that many of you are praying for wisdom, discernment, safety and so much more. We thank you for that. The comforting thing is that no matter what challenges we face, we know who is supporting us and guiding us--our mighty God.

For those of you whose children attended Rehoboth Middle School in the past, this year is going to look quite different. We are still working through the details of how we will group the students who come to school and how we will meet the needs of students online and in person. We may not be able to do interest based classes the way we have in the past, but know that we are committed to building community, exposing students to a wide variety of experiences, and supporting everyone entrusted to us!

This year our school theme is "Preparing a Table". Our theme verse comes from Romans 15:7 (ESV): "Therefore welcome one another as Christ has welcomed you, for the glory of God." Rehoboth has always been about community and welcome. This year, welcoming is our focus which may seem opposite of what's possible during a pandemic. Whether you are learning at school or at home, it is our prayer that you feel the warming glow of Christ's welcome. Our table of fellowship is prepared for you. And may we all remember why we seek this--for the glory of God!

Normally in this space, I highlight some important dates for the beginning of the year, but this is more complicated this year. Orientation will take place over the week of August 17-21. You will have an assigned day and time. In addition, school will begin entirely online for at least 3 weeks beginning August 24.

If you have any questions or concerns, feel free to contact your child's teacher or me!

**Once again, welcome to a new school year and we are excited to see you and your child soon.**

Sincerely,  
Peter Ippel, Middle School Principal  
Rehoboth Christian School  
(505) 726-9605

# 6<sup>th</sup> Grade Supply List

## Rehoboth Christian School 2020

**Please make sure your child has these items for school.**

***These items will be stored in your locker:***

- 1) Lined Notebook paper (either in the form of 4 spiral notebooks or loose leaf paper)
- 2) 2 Composition Notebooks
- 3) 1" binder for each: Math/Reading, Bible/Socials, Language/Science. (3 total)
- 4) Scissors
- 5) glue stick
- 6) 12 inch ruler
- 7) pencils
- 8) calculator
- 9) blue or black pens
- 10) Colored pencils
- 11) pencil box/pouch that will hold everything listed above.
- 12) **NIV Bible**
- 13) Locker Shelf (lockers are only 11 ½" wide, not all shelves will fit!)

- *At this time, we won't be using lockers - if we're allowed to in the future, you'll need one.*

***This items will be given to your homeroom teacher:***

- 14) 2 boxes of tissue

**Things that can be donated to the classroom if you wish: (aka - Things we always run out of because we loan them to students as needed.)**

2-3 Clorox Wipe containers  
Markers  
Colored Pencils  
Dry Erase markers  
**Pencils**  
Loose leaf lined paper

# Rehoboth Middle School

## 7th & 8th Grade Supply List



### Social Studies

- ☐ 3-ring binder with pockets
- ☐ Coloring utensils

### Math

- ☐ Calculator (Recommended: Texas Instruments TI-30x IIS or TI-30Xa)
- ☐ Composition book (college ruled ,100 pgs)
- ☐ 2 inch binder
- ☐ Dividers
- ☐ Small whiteboard
- ☐ Dry erase markers (3)
- ☐ Highlighters (3)
- ☐ Transparent tape or glue stick

### Science

- ☐ Composition book (must have **100 pages, not 80**)
- ☐ Colored pencils or skinny markers
- ☐ Pencils
- ☐ Folder
- ☐ Scissors
- ☐ Ruler
- ☐ Clear tape ("Scotch tape" or packing tape is fine)
- ☐ Several glue sticks (For Science Fair posters in February)
- ☐ When we have school online, I will sometimes ask the students to use common items from around the house for an experiment, such as salt, dish soap, an egg, a penny, food coloring, paper towel, etc. I will let them know a week or so before the experiment, just in case this is something they need to get from the store. Stay posted!

### Communications

- ☐ One 5-subject spiral notebook
- ☐ One 3-prong pocket folder (paper or plastic)
- ☐ Highlighters (1 green, 1 yellow, 1 pink)
- ☐ Earbuds

### 7th/8th Bible

- ☐ Bible (NIV preferred, other versions OK)
- ☐ 3-ring binder (7th grade)
- ☐ 3-prong folder (8th grade)
- ☐ 8.5 X 11 notebook paper

### 8th Grade Futures

- ☐ 1" or 1.5" 3 ring binder
- ☐ Composition Book

### 7th Grade Reading

- ☐ 3 Ring binder with pockets
- ☐ 8.5 x 11 notebook paper

### General

- ☐ 2 boxes of tissues for Block A classroom
- ☐ 2 containers of disinfecting wipes (if available) - give 1 to Block A teacher and 1 to Ms. Peywa
- ☐ Folder for Homework

### Dress Code

We want to instill in our students a sense of professionalism. Therefore, when buying school clothes for your kids this summer, please avoid clothes with any holes or elastic waist bands. If a student comes to school with pants or shorts that are in violation of this, they will be removed from the classroom and will be required to call their parents/guardians for a change of clothes. Thank you for helping us hold your kids to a higher standard!

## Combined List - 7th Grade

- ☐ 4 three-ring binders with pockets
- ☐ 2 composition notebooks (college, 100 pgs)
- ☐ 1 five-subject spiral notebook
- ☐ 1 three-prong pocket folder (paper or plastic)
- ☐ 2 two-pocket folders
- ☐ Binder tab dividers (one package)
- ☐ 8.5 x 11 notebook paper
- ☐ Small whiteboard
  
- ☐ Pencils
- ☐ Pens
- ☐ Colored pencils or skinny markers
- ☐ Highlighters (green, yellow, and pink ideal)
- ☐ 3 dry erase markers
- ☐ Scissors
- ☐ Ruler
- ☐ Glue sticks (several)
- ☐ Roll of transparent tape
  
- ☐ Calculator (Recommended: Texas Instruments TI-30x IIS or TI-30Xa)
- ☐ Earbuds
  
- ☐ Bible (NIV preferred, other versions OK)
  
- ☐ 2 boxes of tissues
- ☐ 2 containers of disinfectant wipes (if available)

## Combined List - 8th Grade

- ☐ 3 three-ring binders with pockets
- ☐ 3 composition notebooks (college, 100 pgs)
- ☐ 1 five-subject spiral notebook
- ☐ 2 three-prong pocket folders (paper or plastic)
- ☐ 2 two-pocket folders
- ☐ Binder tab dividers (one package)
- ☐ 8.5 x 11 notebook paper
- ☐ Small whiteboard
  
- ☐ Pencils
- ☐ Pens
- ☐ Colored pencils or skinny markers
- ☐ Highlighters (green, yellow, and pink ideal)
- ☐ 3 dry erase markers
- ☐ Scissors
- ☐ Ruler
- ☐ Glue sticks (several)
- ☐ Roll of transparent tape
  
- ☐ Calculator (Recommended: Texas Instruments TI-30x IIS or TI-30Xa)
- ☐ Earbuds
  
- ☐ Bible (NIV preferred, other versions OK)
  
- ☐ 2 boxes of tissues
- ☐ 2 containers of disinfectant wipes (if available)

# High School

**High School Handbook:**

<https://www.rcsnm.org/admissions/schools/high-school.cfm>

[Table of Contents](#)



# Parents of RCS High School Students

---

Hello, RCHS Families! My name is Dan Meester, and I am the high school principal at Rehoboth. Although we won't be starting the year in the same way as we always have, I want you to know that we are all eager to interact with our students again, and we can't wait to give them and you the best experience possible, no matter what the parameters of our learning.

This year, our school theme is "Preparing a Table." That's something the Lord does for us, and as His Living Images in the world, it's something that we should do for others too. Many important activities happen around tables, and they take on a symbolic meaning as places that bring people together. We want you to know that there is a special place just for you, both at Rehoboth's table and God's table. There are no outsiders here—just family. We look forward to making all of you feel welcome this year, regardless of how close or far apart we are. Blessings to you all!

## All High School Students

During Orientation week, there will be an opportunity before your scheduled time to stop by with Chris Huizinga, the high school counselor, to complete your student's schedule. Please visit his table to finalize or make any changes.

Sincerely,  
Dan Meester  
Principal, Rehoboth Christian High School

# General High School Supply List

Because High School students' schedules vary for each student, this general supply list is to help you purchase some of the supplies that are typically needed in high school. Specific supplies that may be needed for a course will be distributed during the first days of school.



- It is recommended that High School students have **a spiral notebook** for each of their courses.
- High School students typically need a way to organize handouts and other papers for each of their courses. **A three-ring binder or a folder** for each course is recommended for such organization.
- High School students should have a supply of both **pens and pencils** for their courses.
- Students should have a minimum of a **scientific calculator** for their math and science classes. For Math classes that are Algebra 2 and higher a graphing calculator will be provided for you.
- Although not required, students are allowed to bring their own devices such as personal laptops and tablets to aid in their school work. The high school does have a computer lab for student use as well as other classroom based technologies.

# REHOBOTH CHRISTIAN HIGH SCHOOL

## DRESS CODE

---

Some of the most often asked questions are about RCS dress code and hairstyle rules. Please use this summary of the handbook to help make good decisions about hairstyles and the clothing purchased for school activities.

It is quite difficult to make an exhaustive list of acceptable school dress, therefore, guidelines are given below with the understanding the principal has the final authority/decision regarding acceptable school dress based on the overarching standard being neat, clean and modest/tasteful in relationship to our Christian ethos and school environment.

1. Shirts and blouses must have a collar and/or sleeves.
2. Except for the ear, visible body piercings are not allowed at school.
3. Headgear of any kind, including hats, hoods, bandanas, and/or hairnets, may only be worn outside school buildings.
4. Accessories including, but not limited to, studded bracelets, belts, or necklaces; belt loop or chain wallets; and extended belts are not permitted on campus.
5. Pants/shorts/jeans/overalls worn in a manner that exposes underwear or bare skin may not be worn. They should also be of a moderate fit, neither too tight nor too large and baggy. Pant cuffs must not drag on the floor or have a width that exceeds the length of the student's shoe or be wider than the thigh.
6. Tattered, torn, shredded, or threadbare jeans are not permitted.
7. Shorts or skirts which are higher than the student's extended arm and fingers when standing straight, are not allowed.
8. Spandex shorts are not allowed. Leggings (tights, yoga pants, jeggings, stretchy pants, spandex, etc.) can only be worn while covered by shorts, skirts, or tops that meet the extended arm guideline above.
9. Also not permitted are shirts or tops which expose the midriff, cleavage or undergarments, shirts or tops made of see-through material, tights, or fishnets.
10. Clothing, tattoos, or accessories which advertise, display, or promote any drug (including tobacco and alcohol), sexual innuendo, violence, weaponry, satanic symbols, profanity, bands of any kind including Christian, skulls, blood, hate, or bigotry towards any group or are offensive or disrespectful to other individuals are not permitted.
11. Hair and facial hair need to be moderate, well-groomed, and of a normally occurring hair color. (This means no highlights, even temporary, of pink, green, blue, etc.)

# Athletics

**Sports Schedules are currently being updated and changed due to the NEW NMAA Sports Calendar for 2020-21 school year.**

**Once finalized, schedules will be updated on the RCS Website and MaxPreps. Head Coaches will also hand out to athletes once finalized. Mr. Pete, our RCS Athletic Director will also email schedules to all RCS Families. Schedules will always be subject to change due to the changing circumstances of COVID.**

**[www.rcsnm.org](http://www.rcsnm.org)**

**[www.maxpreps.com](http://www.maxpreps.com)**

**[Table of Contents](#)**



# Athletics



for

## Mid-School & High School STUDENT ATHLETES

---

NMAA passed a new policy for the 2020-21 school year ONLY for sports physicals. Middle School and High School students who received a sports physical for the 2019-20 school year do not need to receive another sports physical for the 2020-21 school year. There are still some specific situations that require sports physicals still.

Here is the link of two forms that need to be completed. They are under Athletic Resources on the right side:

<https://www.rcsnm.org/admissions/schools/athletic-website.cfm>

Rehoboth Christian School will require our sports packet to be filled out still, but not the physical examination form. The file titled, "RCS Sports Packet 20-21" will need to be filled out by all RCS students and parents who plan on participating in Athletics for the 2020-21 school year.

The other form I attached, titled "Physical Examination Form" is for students who need a physical examination based on the criteria listed below by NMAA. This will need to be submitted along with the sports packet and filled out by a physician and parent before official practices start for the sport your child decides to participate in.

Incoming 6th graders for the 2020-21 school year who plan on participating in sports at RCS will need a packet and physical form completed as they will be new to the athletic program.

**Below I have included a brief summary of why NMAA changed this policy for this school year only.**

NMAA: Due to the coronavirus pandemic and limited access to health care providers, NMAA will allow a emergency addition to Bylaw 6.15 (Physical Fitness) that would permit a one-year extension for students who received a preparticipation examination (PPE) for the 2019-2020 academic year.

[Table of Contents](#)

The 2019-20 sports physical shall be accepted for the 2020-21 school year if the following criteria are met over the time period since the student's 2019-20 sport physical.

1. Student did not have any new injury.
2. Student did not receive a new medical diagnosis.
3. Student has not had Covid-19.

If any of the above criteria are not met, the Student must have an updated sports physical for 2020-21. Students who did not receive a sports physical during the 2019-2020 school year must also have an updated physical.

Due to COVID-19 and the potentially long-term limited access to primary health care providers, and in accordance with NFHS recommendations, the NMAA is allowing a one-year extension for students who received a preparticipation examination (PPE) during the 2019-2020 academic year. This proposal eases the burden on local primary care providers and also maintains balance between student safety and the benefits of athletic participation.

If you have any questions please contact me. When submitting the sports packets, please drop them off with me either at the RCS admin building or HS Office. Secretaries will put them in my box. Please get a copy of the forms submitted so you have a copy for your records. Packets will need to be reviewed by me to ensure everyone is cleared for participation for the 2020-21 school year.

**Official Cross Country and Volleyball Practices begin  
Monday, September 28, 2020.**

**Continuing students:** Coaches will be in contact regarding pre-season workouts.

**New students:** Please contact the Athletic Director, Adrian Pete, by email if you are interested in a sport this school year and interested in joining pre-season workouts at [adrianpete@rcsnm.org](mailto:adrianpete@rcsnm.org)

**When do sports start?**

Volleyball and Cross Country - October 2020

Basketball - January 2020

Soccer - February 2020

Baseball, Track, and Softball - April 2020

[Table of Contents](#)

# Student Support Services

---

At Rehoboth Christian School, we strive to create an inclusive community that meets student's needs at all levels. We hold high expectations for our students but also provide the support they need to be successful. To that end, I'd like to introduce the teachers who work tirelessly to help every student succeed.

**Kelly Arendsen** is the director of our K-12 academic support program and also provides services for students in the high school. She works to ensure that students who may need extra services are identified and that their needs are met.

**Chad Meekhof** spends part of his day as an academic support teacher in the High School.

**Abbie Huizinga** just joined the staff to provide special education services in the elementary and middle school. She will provide support directly to students and also to teachers so that they are able to help all students be successful in the classroom setting.

**Jamie Frederiksen** also just joined the elementary staff to provide Title 1 support to students who need an extra boost in reading. She will work with teachers as they bring literacy skills to students and will also provide extra reading instruction to help all students become readers!

**Scott MacLaren** provides Title 1 support to elementary students who need an extra boost in math. He works with small groups of students to reinforce foundational math concepts and help all students build a strong foundation in number sense and problem solving.

**Chris Huizinga** is the high school counselor. He provides social emotional support for students and is an academic advisor who schedules student's classes. He also assists students as a college guidance counselor.

**Daniel Ensign** just joined the elementary and middle school staff as the school counselor. He is always ready to listen to students and help them process anything they may be dealing with. He provides support to staff members and helps them provide emotional support to students. He also helps students plan for and think about their futures.

# Parent Volunteer Program (PVP)

---

The launching of our Parent Volunteer Program (PVP) has had a difficult time. Because studies have shown that parent/guardian involvement in the activities of their child's school is linked to better school success and because we value community and the sense of family, PVP was initiated for the 2019-20 school year as a way to encourage adult involvement in the life of the school. Wonderful results occurred as parents worked on the installation of a new playground, helped with maintaining our grounds, tutored, gave presentations in classrooms, chaperoned field trips, prepared student book bags, worked in the concession stand, helped out with athletic and fine art events and served on committees. Many families were on their way towards 10 or more volunteer hours when school life was halted by the pandemic.

Because we will not return to "normal" too soon this year, we have decided to postpone the official PVP program this year. We still would LOVE to encourage volunteerism. Opportunities for service will be shared throughout the year. We will be sharing these opportunities in the Parents News which is emailed to you each Thursday. We will always be sure that safety is a priority for any volunteer opportunity.

Looking forward to PVP 2021-22!



# Transportation

---

My name is Jonathon Terborg and I am the Director of Transportation. The start of the 2020-2021 school year will be very different from years past. There are many challenges that lie ahead for all. Although we are planning on keeping the hub stops the same on our various routes, please understand that we may need to make adjustments throughout the school year. Students will get their hub stop location and arrival/dropoff times during the RCS orientation week.

While we will be starting our year with our old fleet of buses, we are excited to let you know that prayers have been answered!! RCS has ordered 6 brand new buses. They are being built at the factory as I write this letter. We are hopeful that they will arrive in early fall! Praise God for the grant that Rehoboth received and for the donations that have been given for the purchase of these buses. Pray that the remaining funds needed for the bus purchases will be raised.

You may contact me for questions or concerns at (505)726-9622 or by email at: [jterborg@rcsnm.org](mailto:jterborg@rcsnm.org)

Jonathon Terborg  
Director of Operations  
Rehoboth Christian School

**During our Family Orientation week, you will be confirming your bus hub stop location.**

# Transportation Update

---

We want to welcome you to a new school year! We are so blessed to have your children attend RCS and we want to assure that if your child rides the bus, we will do everything we can to keep them safe. Below are a few guidelines we'd like to remind you of:

- 1) Please make sure to **update your contact information in RENWEB**. Each year we have parents that we cannot reach because their Renweb contact information is not updated.
- 2) If you as a parent have to make changes to your **child's bus arrangement** for the day, we ask that you PLEASE call the school secretaries HS, ES, or MS **before 2:30**. (HS) Mrs. Lynch (505)726-9632, (ES-MS) Mrs Peywa (505)726-9675. This ensures that we have enough time to contact the student with the proper permission slip for the bus driver. **\*\*The bus driver will NOT allow a student to get on a different bus without that permission slip. \*\*The bus driver will NOT allow a student to get on the bus without a mask.**
- 3) Please take some time to review with your families the following **"stranger danger" rules**:
  - Walk to and from the school bus in groups if possible.
  - Never talk to strangers or accept rides from them.
  - Never get into a car, enter a home, look for a lost pet, or accept candy or toys from an adult, unless your parents know what you are doing and have given you their permission first.
  - If anything unusual occurs, tell an adult immediately. Parents and teachers need to know right away what happened.
  - Don't panic. If you are afraid or have a problem, call a parent or a trusted adult.
  - Arrange for immediate access to neighbors and other trusted adults who can answer questions or be contacted in case of an emergency.
  - Keep your house key hidden. Don't give it to anyone and don't keep it in a visible place that would tell people you are going home to an empty house.
  - Tell a trusted adult - parent, teacher or counselor - if anyone ever makes you feel uncomfortable.
- 4) Our policy here at Rehoboth for **dropping off kids at their respective bus stop** is to make sure each child gets off at exactly the same stop everyday; if walking home, the distances are usually less than one mile; if being picked up, our bus drivers know each vehicle and parent and/or guardian.
  - When one of these situations doesn't seem right, or we don't recognize a designated ride/guardian – we will not allow that child to get off the bus. Rather, we will make an attempt to reach the parent or guardian by phone and if we are unsuccessful, we will continue on our bus route and the parent/guardian can meet us at another bus stop. We will also try to drop the child off at their stop on our return to base route.
  - If we are still unsuccessful, we will call the transportation manager and make arrangements to drop off the child back at school with a school staff member until proper arrangements for pick up are made.

# Food Service

---

Thanks for allowing us to serve you all in March, April and May for curbside service! WE really enjoyed seeing the kids and making new friends at the curb this Spring. The Federal government has not approved free meals for everyone, so the school meal program now reverts back to the normal free, reduced and full pay priced meals. Unlike this Spring, these meals are for enrolled RCS students only!

## Step 1: [Free and Reduced Household Application](#)

This year it is especially important to complete and turn in your [Free and Reduced Household Application](#).

If you haven't already filled out a Household Application for Free and Reduced lunches, please do! The Federal government WANTS to feed your kids! **We need a NEW form each year!** This will determine how or if we charge for your children's meals.

Please fill out the application online as a part of this mailer or see Darlene Stewart at the Administration office for a paper copy.

For the parents who are reduced or full pay status for the child's meal accounts (pursuant to the Household application findings).

- There are NO credit limits on your accounts. We will NOT be reminding your children or sending reminders when you are at or beyond your credit limit.
- Your meals will add up and at the end of the month you will receive a bill for meals. To avoid a large month end meal tab it is advisable to keep money on the family account. Meals not paid for will be monitored by the same rules as tuition.
- You are responsible for the meals your child eats!
- Lunch prices have been the same for 4 years. We are increasing our prices this year minimally.
  - **Reduced Breakfast is .40 cents Reduced Lunch is .50 cents**
  - **Full Pay Breakfast is \$2.10 and Full Pay Lunch is \$3.25**

### How will I get my meals:

This year we will be distance learning for the first weeks. The buses will run twice a week with supplies for the kids. We will drop off multiple breakfasts and lunches for the week. The meals will not be hot because we do not have a safe way to keep the food hot on the bus route.

[Table of Contents](#)

## Step 2: Order your meals for delivery to your Bus stop

Please order your breakfast and lunches each week. I want to have plenty of breakfast and lunch bundles taken to each bus stop. Bundles are multiple meals for several days. You must have your order in by Wednesday the week prior to reserve your bundle. If your name is not on the list, you won't get a meal bundle.

During the time of online learning , we will not be sending daily individualized meals. Meals must be purchased as a bundle. Either, Monday through Wednesday and or Thursday and Friday.

I apologize for the inconvenience. During these crazy times, we have learned that we must adjust and re-adjust constantly!

### Online Learning Menu (first three weeks)

<b>August 17</b> <b>BF:</b> Bagel w/ Cream Cheese, Fruit, Milk  <b>Lunch:</b> Turkey & Jack on Croissant Chips, Cucumber, Fruit Cup, Milk	<b>August 18</b> <b>BF:</b> Waffles, Syrup Fruit, Milk  <b>Lunch:</b> Ham & Cheddar on French Roll, Doritos, Celery, Fruit, Milk	<b>August 19</b> <b>BF:</b> Apple Cinnamon Cheerios, Banan, Milk  <b>Lunch:</b> Sunbutter Uncrustable (no peanuts), Pretzel Goldfish, Baby Carrots, Fruit, Milk	<b>August 20</b> <b>BF:</b> Blueberry Muffin Fruit Cup, Milk  <b>Lunch:</b> Roast Beef & Pepper Jack on Ciabatta, Cheez its, Cucumber, Fruit, Milk	<b>August 21</b> <b>BF:</b> Yogurt Cup, Granola Pak, Fruit, Milk  <b>Lunch:</b> Chef Salad (Salad Greens, Tomato, Boiled egg, Ham, Turkey, grated cheddar, Croutons) Graham Crackers, Ranch, Fruit, Milk
<b>August 24</b> <b>BF:</b> Granola Bar GoGurt Fruit Milk  <b>Lunch:</b> Turkey & Swiss on Croissant, Goldfish, Celery, Fruit, Milk	<b>August 25</b> <b>BF:</b> Pancakes Syrup Fruit Milk  <b>Lunch:</b> Roast Beef & Cheddar on Ciabatta, Sun Chips, Jicama, Fruit, Milk	<b>August 26</b> <b>BF:</b> Frosted Mini Wheats Banana Milk  <b>Lunch:</b> Ham & American on Sliced Bread, Smart Pop , Baby Carrots, Fruit, Milk	<b>August 27</b> <b>BF:</b> Cinnamon Rolls Fruit, Milk  <b>Lunch:</b> Sub Sandwich on French Roll (Turkey, Ham, American, Pepperoni), Chips, Cucumbers, Fruit, Milk	<b>August 28</b> <b>BF:</b> Cherry Frudel Fruit, Milk  <b>Lunch:</b> Pinata Salad (Greens, Black bean, Corn, Broccoli, Bell Pepper salsa, Cheddar shreds & Jicama), Fritos, Ranch, Fruit, Milk
<b>August 31</b> <b>BF:</b> Yogurt Parfait, Fruit, Milk	<b>September 1</b> <b>BF:</b> Bagel w/ Cream Cheese, Fruit, Milk	<b>September 2</b> <b>BF:</b> Frosted Flakes Banana, Milk	<b>September 3</b> <b>BF:</b> Cinnamon Rolls, Fruit, Milk	<b>September 4</b> <b>BF:</b> Pancake Wrap, Fruit, Milk

<b>Lunch:</b> Turkey & Provolone Wrap, Cucumber, Sunchip, Fruit, Milk	<b>Lunch:</b> Ham & American on Sliced Bread, Chips, Celery, Fruit, Milk	<b>Lunch:</b> Roast Beef & Swiss on French, Doritos, Baby Carrots, Fruit Cup, Milk	<b>Lunch:</b> Pizza Salad (Greens, Pepperoni, Mozzarella shreds, Red Bells, Grape Tomato, Croutons), Ranch, Grahams, Fruit, Milk	<b>Lunch:</b> Turkey, Ham & Cheese Sub, Pretzels, Bell Peppers, Fruit, Milk
<b>September 7</b> <b>BF:</b>  <b>NO School Today</b>  <b>Lunch:</b>  <b>No School Today</b>	<b>September 8</b> <b>BF:</b> Muffin Top Boiled Egg, Fruit, Milk  <b>Lunch:</b> Roast Beef & Pepper Jack on Ciabatta, Cheez- its, Cucumber, Fruit, Milk	<b>September 9</b> <b>BF:</b> Kix Cereal, Banana, Milk  <b>Lunch:</b> Ham & Cheddar on French Roll, Doritos, Baby Carrots, Fruit, Milk	<b>September 10</b> <b>BF:</b> Yogurt Parfait, Granola Pak, Fruit, Milk  <b>Lunch:</b> Turkey & Jack on Croissant, Chips, Celery, Fruit Milk	<b>September 11</b> <b>BF:</b> Uncrustable (Sunbutter, no peanuts), Fruit, Milk  <b>Lunch:</b> Chef Salad (Salad Greens, Tomato, Boiled egg, Ham, Turkey, grated cheddar, Croutons) Graham Crackers, Ranch, Fruit, Milk

**RCS is an equal opportunity provider.**

**Menu subject to change due to product availability.**

**STEP 1** List ALL Household Members who are infants, children, and students up to and including grade 12 (if more spaces are required for additional names, attach another sheet of paper)

**Children in Foster care and children who meet the definition of Homeless,**

**Migrant or Runaway are**  
**eligible for free meals. Read**  
**How to Apply for Free and**  
**Reduced Price School**  
**Meals for more information.**

Child's First Name	MI	Child's Last Name	Grade	Student? Yes No	Check all that apply
				<input type="checkbox"/> Yes <input type="checkbox"/> No	<input type="checkbox"/> Foster Child <input type="checkbox"/> Migrant <input type="checkbox"/> Runaway
				<input type="checkbox"/> Yes <input type="checkbox"/> No	<input type="checkbox"/> Foster Child <input type="checkbox"/> Migrant <input type="checkbox"/> Runaway
				<input type="checkbox"/> Yes <input type="checkbox"/> No	<input type="checkbox"/> Foster Child <input type="checkbox"/> Migrant <input type="checkbox"/> Runaway
				<input type="checkbox"/> Yes <input type="checkbox"/> No	<input type="checkbox"/> Foster Child <input type="checkbox"/> Migrant <input type="checkbox"/> Runaway
				<input type="checkbox"/> Yes <input type="checkbox"/> No	<input type="checkbox"/> Foster Child <input type="checkbox"/> Migrant <input type="checkbox"/> Runaway

IF NO > Go to STEP 3. IF YES > Write a case number here then go to STEP 4 (Do not complete STEP 3)

Case Number:

Write only one case number in this space

Report Income for ALL Household Members (Skip this step if you answered 'Yes' to STEP 2)

**A. Child Income**  
Sometimes children in the household earn or receive income. Please include the TOTAL income received by all Household Members listed in STEP 1 here.

How often?				
Weekly	Bi-weekly	2x/Month	Monthly	
<input type="radio"/>	<input type="radio"/>	<input type="radio"/>	<input type="radio"/>	
<input type="radio"/>	<input type="radio"/>	<input type="radio"/>	<input type="radio"/>	
<input type="radio"/>	<input type="radio"/>	<input type="radio"/>	<input type="radio"/>	
<input type="radio"/>	<input type="radio"/>	<input type="radio"/>	<input type="radio"/>	

Child income

\$

**B. All Adult Household Members (including yourself)**

List all Household Members not listed in STEP 1 (including yourself) even if they do not receive income. For each Household Member listed, if they do receive income, report total gross income (before taxes) for each source in whole dollars (no cents) only. If they do not receive income from any source, write "0". If you enter "0" or leave any fields blank, you are certifying (promising) that there is no income to report.

Name of Adult Household Members (First and Last)	Earnings from Work				Public Assistance/Child Support/Alimony				Pensions/Retirement/All Other Income			
	Weekly	Bi-Weekly	2x Month	Monthly	Weekly	Bi-Weekly	2x Month	Monthly	Weekly	Bi-Weekly	2x Month	Monthly
	\$				\$				\$			
	\$				\$				\$			
	\$				\$				\$			
	\$				\$				\$			
	\$				\$				\$			

Total Household Members  
(Children and Adults)

**Last Four Digits of Social Security Number (SSN) of Primary Wage Earner or Other Adult Household Member**

X	X	X
X	X	X


Check if no SSN

☐

Contact information and adult signature. Mail Completed Form To: Rehoboth Christian School P.O. Box 41 Rehoboth, NM 87322

"I certify (promise) that all information on this application is true and that all income is reported. I understand that this information is given in connection with the receipt of Federal funds, and that school officials may verify (check) the information. I am aware that if I purposely give false information, my children may lose meal benefits, and I may be prosecuted under applicable State and Federal laws."

Mailing Address / Street Address (if available)	Apt #			
	City	State	Zip	
Printed name of adult signing the form	Signature of adult			
			Daytime Phone and Email (optional)	
				Today's date



## INSTRUCTIONS

## Sources of Income

Sources of Income for Children	
Sources of Child Income	Example(s)
- Earnings from work	- A child has a regular full or part-time job where they earn a salary or wages
- Social Security - Disability Payments - Survivor's Benefits	- A child is blind or disabled and receives Social Security benefits - A Parent is disabled, retired, or deceased, and their child receives Social Security benefits
- Income from person outside the household	- A friend or extended family member regularly gives a child spending money
- Income from any other source	- A child receives regular income from a private pension fund, annuity, or trust

Sources of Income for Adults		
Earnings from Work	Public Assistance / Alimony / Child Support	Pensions / Retirement / All Other Income
<ul style="list-style-type: none"> <li>- Salary, wages, cash bonuses</li> <li>- Net income from self-employment (farm or business)</li> </ul>	<ul style="list-style-type: none"> <li>- Unemployment benefits</li> <li>- Worker's compensation</li> <li>- Supplemental Security Income (SSI)</li> <li>- Cash assistance from State or local government</li> <li>- Alimony payments</li> <li>- Child support payments</li> <li>- Veteran's benefits</li> <li>- Strike benefits</li> </ul>	<ul style="list-style-type: none"> <li>- Social Security (including railroad retirement and black lung benefits)</li> <li>- Private pensions or disability benefits</li> <li>- Regular income from trusts or estates</li> <li>- Annuities</li> <li>- Investment income</li> <li>- Earned interest</li> <li>- Rental income</li> <li>- Regular cash payments from outside household</li> </ul>
If you are in the U.S. Military: <ul style="list-style-type: none"> <li>- Basic pay and cash bonuses (do NOT include combat pay, FSSA or privatized housing allowances)</li> <li>- Allowances for off-base housing, food and clothing</li> </ul>		

## OPTIONAL

## Children's Racial and Ethnic Identities

We are required to ask for information about your children's race and ethnicity. This information is important and helps to make sure we are fully serving our community. Responding to this section is optional and does not affect your children's eligibility for free or reduced price meals.

Ethnicity (check one): ☐ Hispanic or Latino ☐ Not Hispanic or Latino  
 Race (check one or more): ☐ American Indian or Alaskan Native ☐ Asian ☐ Black or African American ☐ Native Hawaiian or Other Pacific Islander ☐ White

The **Richard B. Russell National School Lunch Act** requires the information on this application. You do not have to give the information, but if you do not, we cannot approve your child for free or reduced price meals. You must include the last four digits of the social security number of the adult household member who signs the application. The last four digits of the social security number is not required when you apply on behalf of a foster child or you list a Supplemental Nutrition Assistance Program (SNAP), Temporary Assistance for Needy Families (TANF) Program or Food Distribution Program on Indian Reservations (FDPRI) case number or other FDPRI identifier for your child or when you indicate that the adult household member signing the application does not have a social security number. We will use your information to determine if your child is eligible for free or reduced price meals, and for administration and enforcement of the lunch and breakfast programs. We MAY share your eligibility information with education, health, and nutrition programs to help them evaluate, fund, or determine benefits for their programs, auditors for program reviews, and law enforcement officials to help them look into violations of program rules.

Persons with disabilities who require alternative means of communication for program information (e.g. Braille, large print, audiotape, American Sign Language, etc.), should contact the Agency (State or local) where they applied for benefits. Individuals who are deaf, hard of hearing or have speech disabilities may contact USDA through the Federal Relay Service at (800) 877-8339. Additionally, program information may be made available in languages other than English.

To file a program complaint of discrimination, complete the USDA Program Discrimination Complaint Form, (AD-3027) found online at: [http://www.ascr.usda.gov/complaint\\_filing\\_cust.html](http://www.ascr.usda.gov/complaint_filing_cust.html), and at any USDA office, or write a letter addressed to USDA and provide in the letter all of the information requested in the form. To request a copy of the complaint form, call (866) 632-9992. Submit your completed form or letter to USDA by:

mail:  
 U.S. Department of Agriculture  
 Office of the Assistant Secretary for Civil Rights  
 1400 Independence Avenue, SW  
 Washington, D.C. 20250-9410  
 fax: (202) 680-7442, or  
 email: [program.intake@usda.gov](mailto:program.intake@usda.gov).  
 This institution is an equal opportunity provider.

## Do not fill out

## For School Use Only

Annual Income Conversion: Weekly x 52, Every 2 Weeks x 26, Twice a Month x 24 Monthly x 12

How often?

Total Income

Weekly  Bi-Weekly  2 Month  Monthly

Household Size

Categorical Eligibility ☐

Eligibility:

Free  Reduced  Denied

Determining Official's Signature

Date

Confirming Official's Signature

Date

Verifying Official's Signature

Date

# School Nurse

---

Whether your child will be in the online or hybrid model, our student body still needs to keep in compliance with the New Mexico Department of Health regarding school immunization.

The NM Department of Health audits Rehoboth Christian School and we will need, if any, updated immunization record before school begins. For all new students, we will need a copy on file to begin the school year. If you can please request a copy to be sent to us (and send us the request form you sent) or share your copy by scanning and emailing it to [admissions@rcsnm.org](mailto:admissions@rcsnm.org).

For more information you can visit the [NM Department of Health](#). See attached flyer for dates and locations for immunizations.



# MCKINLEY COUNTY

Back To School!

## IMMUNIZATION CLINICS

DAY	DATE	TIME
Tuesday	Aug. 4	8:30AM – 11:00AM
Thursday	Aug. 6	8:30AM – 4:00PM
Tuesday	Aug. 11	8:30AM – 4:00AM
Thursday	Aug 13	8:30AM – 4:00AM
Tuesday	Aug 18	8:30AM – 11:00AM
Thursday	Aug 20	8:30AM – 11:00AM
Tuesday	Aug 25	8:30AM – 11:00AM
Thursday	Aug 27	8:30AM – 11:00AM

- ✓ *By appointment only.*
- ✓ *Call 505-722-4391 to schedule an appointment.*
- ✓ *Bring your child's shot record!*
- ✓ *Vaccines will be provided at no cost for children through 18 years of age.*

McKinley Public Health Office  
1919 College Dr, Gallup NM 87301  
(505) 722-4391

# School Communication

---

There are several means of communication used by the school to have teachers and parents stay connected. Below are several forms that we use. We welcome communication from parents to the school.

## **ParentsWeb login page:**

<https://re-nm.client.renweb.com/pwr/>

---

### **Parent News:**

Every Thursday, the Parent News is emailed and each school gives their announcements along with any events. Departments often give information as well.

### **Email:**

Most of our staff have a school email and can be found on our school website.

1. Go to our school website: [www.rcsnm.org](http://www.rcsnm.org)
2. Under the tab "Schools" there is a drop down menu. Select "[Staff Directory](#)."

### **ParentsWeb:**

Every parent has a Parentsweb account.

For new parents, you will have to create a new account from the parentsweb login webpage above. In your Parentsweb account, you have access to the school directory and you are able to update your personal information here. You also can view your student's grades and attendance. This is also where to re-enroll for the next school year when it becomes available.

### **Text Messages:**

Messages sent by text include snow delays or change of information on events or any other info that will need parent's immediate attention. Please note you will only receive text messages from the school IF you selected to receive them. Each parent has to set up their own preference within ParentsWeb.

#### To view your preferences:

1. Log into your ParentsWeb.
2. On left sidebar click "FAMILY" and in drop down menu, you can select "Family Home". Family preference is the third column.
3. This is where you will see what you selected regarding emails, director name and info and parent alerts you agreed or disagreed to use.

#### To make changes to your preferences:

[Table of Contents](#)

1. Log into your ParentsWeb.
2. On left sidebar click "FAMILY" and in drop down menu, you can select "Family Home".
3. Family preference is the third column.
4. This is where you will see what you selected regarding emails, director name and info and parent alerts you agreed or disagreed to use
5. To make updates to this section, click on the "pen icon" on the right corner of the column. Go ahead and click and this will bring you to a page with what you'd like to update.

### **Parent Directory:**

Rehoboth in the past has made available a paper booklet of our school directory. We have now moved to an electronic directory. This directory is made up of our parents contact information and only if parent has allowed this feature.

After signing up for ParentsWeb, you can find the parent directory as follows:

1. Log into your ParentsWeb
2. On left sidebar, click "School"
3. On the drop down menu, click "Directory"

### **Online School Calendar:**

Events, dates and times including all sport games are found on our school online calendar.

1. Go to our school website: [www.rcsnm.org](http://www.rcsnm.org)
2. Click the "Schools" tab
3. Click "School Calendar" on the drop down menu
4. Events are subject to change.

# Tuition Info & FACTS

[Table of Contents](#)



# FACTS login & Tuition payment plan in FACTS

## To create a FACTS account:

1. Go to login page of [FACTS](https://online.factsmgt.com/signin/46T5C) or <https://online.factsmgt.com/signin/46T5C>
2. Now click on, "create a username & password" under NEW ACCOUNT
3. Input your email address and follow the prompts to create a new account, username, and pin number.

## To set up tuition payment plan:

1. Log into FACTS & click on the green button, "set up a payment plan", on the left side for the upcoming school year
2. Follow the prompts to begin.
3. At the top of the page, you will see a seven (7) step timeline to finish your tuition payment plan setup.
  - a. Verify your family information and click "next"
4. Under student, you will have to add your student.
  - a. Please only add your admitted RCS student only. Click "next".
5. Under plan option, there are several selections to choose from.
  - a. Review each option carefully, especially the "available payment days".
    - i. Last = the last day of the month.
    - ii. 15th = the day of the month

**NOTE:** If these payment dates are not good for you, choose an option in FACTS, then contact the Finance Director to set up a more specific time schedule

6. Next, you will be setting up your payment plan details and will choose from the following two options:
  - a. Payments from your bank account directly will have no processing fee
    - i. Enter your bank account (including acct. # & routing #)
  - b. Payments from your credit/debit card, a processing fee will be charged from FACTS with this option
7. At the bottom, decide on your Peace of Mind benefit and click "next".
8. Under payment schedule, select your payment date and review your payment schedule
  - a. Notice: if the last day of the month falls on a holiday or weekend, the payment will be withdrawn from your bank account the next business day
  - b. The \$50 payment plan fee will be paid by RCS for the school year
9. Next, review your payment details and terms & conditions. Then click "authorize"
10. If needed, print a copy of your payment details and plan.
11. You will receive an email back from FACTS once the Finance Director has input your contract information. Please confirm if this matches your contract and payment frequency choice.





## 2020-2021 Tuition & Tuition Assistance Policies and Procedures

---

*Rehoboth Christian School is sustained by committed donors and parents. Over 2,000 donors contributed 1.8 million dollars for our students in the past year. Rehoboth's existence is also dependent on parents who faithfully support Rehoboth through tuition payments. We are thankful to a loving God who uses so many for the ministry of Rehoboth.*

### **I. Enrollment Procedures**

#### **A. Re-Enrollment**

1. Re-Enrollment for the 2020-2021 school year begins on 01/20/2020. To confirm a seat for the 2020-2021 school year, the following conditions must be met:
  - a) Re-enrollment must be completed through ParentsWeb
  - b) No Administration concerns have been expressed regarding student academic progress or student behavior.
  - c) A Tuition Assistance Application must be completed if tuition assistance is needed by March 27, 2020. After March 27th, a full tuition contract will be made for all re-enrolled students.
  - d) A tuition contract must be issued and signed.
2. To secure a seat for the following school year, all previous school year tuition obligations are to be met by May 15, 2020.

#### **B. New Student Enrollment**

1. New student enrollment for the 2020-2021 school year begins on 02/03/2020. To secure a seat for the 2020-2021 school year, the following conditions must be met:
  - a) The online application has been completed through Renweb and admission process completed
  - b) After a student is offered acceptance and enrolled, a \$200.00 new student admission deposit is paid for the first student and \$100 deposit for each student thereafter.
  - c) If a current RCS family is adding an additional new student deposit it is \$100.00
  - d) All new student admission deposits are applied to the 2020-21 tuition account and are fully refundable up to July 1st.
  - e) A Tuition Assistance Application must be completed if tuition assistance is needed. A tuition contract will be issued and should be signed within 2 weeks of admission.

## **II. Tiers of tuition charges K-12**

- A. Tuition is based on the family income. There are three tiers which families will fit in to:
1. Tier 1: Full tuition charge will be \$7,575 for students accepted and enrolled in grades K-8, and \$7,975 for students accepted and enrolled in grades 9-12. (Please note that both the 3 and 4 year old Pre K are stated funded programs and require no tuition)
  2. Tier 2: Partial tuition charge will be based on 1040 modified adjusted gross income. 11% for the first family member, plus 3% for each additional family member enrolled into grades K-12. Modified adjusted gross income is determined to be adjusted gross income reported on the 1040. For families in tier 2 with more than one student in the school, minimum tuition charge will be \$1,500 for additional students.
  3. Tier 3: Minimum tuition charge will be \$3,500 for the first family member accepted, plus \$1,500 for each additional family member accepted into grades K-12.

## **III. Information regarding tuition payments**

- A. Tuition is a very important source of revenue for the school and timely payments are crucial. Please note the following:
1. Families in Tiers 1, 2 or 3 are eligible for a 5% discount if the annual tuition bill is paid in full prior to 8/1/2020. For families who are enrolled later in the year, the 5% discount is to be paid by the first day your child begins.
  2. Families in Tiers 1, 2 or 3 may choose from one of the 3 different tuition payment plans.
    - a) A 12 month payment plan which runs from June 1, 2020 through May 25, 2021.
    - b) A 11 month payment plan which runs from July 1, 2020 through May 25, 2021.
    - c) A 10 month payment plan which runs from August 1, 2020 through May 25, 2021.
  3. For tuition payments, families are strongly encouraged to enroll in the FACTS system which makes automatic tuition payments in the form of bank direct withdrawal or payroll deduction. There is great flexibility in this system which allows parents to choose the best dates for automatic withdrawal. Families choosing not to use the FACTs automatic payment system will be charged a one time fee of \$50. This is a processing fee to fund the cost for the business office of Rehoboth to set-up and process the non-FACTS system for each family.
  4. RCS has the following fee charges effective the 2020-2021 school year:
    - a) Credit card surcharge of 3% for all credit card transactions when paying for tuition or other services.
    - b) Non-Sufficient Funds charge of \$35 for any returned checks or ACH transactions.

## **IV. Tuition Assistance (TA)**

- A. RCS has the right to deny Tuition Assistance until all sources of income are verified, whether or not one or both of the parents are participating in the payment of tuition
- B. For Tuition Assistance applicants who do not file income tax, alternative verification of income will be required.
- C. Tuition Assistance is available for Tiers 2 & 3 listed above in section II.
- D. Tuition Assistance is based on both parents' or guardians' income, regardless of marital status. Documentation to be submitted with the application include the first and signature page of the personal income tax return (1040, or 1040A) listing both parents' income (unless if one or both are deceased). All students listed as a family must be included on the 1040 as dependents in order to

qualify for Tuition Assistance. If a student is listed on another 1040, we require the collection of that 1040 and calculate that as part of the family income. Both living parents (birth, adoptive, or step), if applicable, or both legal guardians, if applicable, will show income in this calculation.

- E. If a family's current income is substantially different than the previous year's 1040 indicates, they should communicate on the Tuition Assistance application. Additional information such as current pay stubs may be required in order to issue the assistance.
- F. Unreported income from a living parent or guardian may result in denial of Tuition Assistance for all students listed in the family. Child support or alimony may be accepted in place of the non-custodial spouse's income only if all students are listed on the custodial parent's income tax form.
- G. ***Rehoboth Christian School requires all families to pay their tuition bills every month by the 15th or as scheduled. Every month, there must be a payment made to Rehoboth. If a payment is not being made, the parents must contact the Director of Finance or the Executive Director immediately. The following process will be used with tuition delinquency:***
  - 1. ***Each month tuition payment must be made***
  - 2. ***Delinquency of 30 days-communicate or meet with the Executive Director, Admissions Director, Director of Finance to make a signed written plan which addresses finances. In addition, students and parents will meet with the Executive Director, Admissions Director, or Finance Director to reflect on the academic and behavioral contributions of the students to the Rehoboth community.***
  - 3. ***Delinquency of 45 days with no communication- No extra curricular activity for students of the family***
  - 4. ***Delinquency of 60 days with no communication - Meet with the tuition appeals committee.***
  - 5. ***Delinquency of 90 days with no communication- student will be withdrawn by RCS.***
- H. In addition to tuition assistance, other funds exist to help families be able to meet their tuition obligations. There are both internal and external scholarships available for which families can apply.





# 2020-2021 Tuition Assistance Application

Please return this application to the administration building or email to [admissions@rcsnm.org](mailto:admissions@rcsnm.org) with your **2019 1040 tax documents for both parents/guardians.**

## Parent/Guardian 1: Parent who claims dependents on tax form

I am the: ☐ Parent ☐ Guardian

Email: \_\_\_\_\_

First Name: \_\_\_\_\_ M.I. \_\_\_\_\_ Last Name: \_\_\_\_\_

Mailing address: \_\_\_\_\_

(monthly statements will be sent here, if not on FACTS)

Have you had a significant change of income from your 2019 1040 tax form and your current pay?

☐ Yes ☐ No

If yes, please explain the significant change:

## Parent/Guardian 2: Will parent 2 also be financially responsible for tuition? ☐ Yes ☐ No

I am the: ☐ Parent ☐ Guardian

If no, please explain below why Parent 2 will not contribute to tuition

First Name: \_\_\_\_\_ M.I. \_\_\_\_\_ Last Name: \_\_\_\_\_

Mailing address: \_\_\_\_\_

☐ address same as parent 1

(monthly statements will be sent here, if not on FACTS)

Email: \_\_\_\_\_

Have you had a significant change of income from your 2019 1040 tax form and your current pay?

☐ Yes ☐ No

If yes, please explain the significant change:

If parent 2 is not contributing to tuition, please explain:

## Other Family/Friends Contributions:

Will you be receiving assistance from other family or friends? ☐ Yes ☐ No

If yes, please state below who we should be receiving tuition payment from, how much will be paid, and how often.



# 2020-2021 Tuition Assistance Application

Page 2

List all children in your household who you are financially responsible under 18 years of age.  
(even those not attending Rehoboth)

<u>Student Name</u>	<u>Relation</u>	<u>School attending</u>	<u>Grade</u>

**Non-Taxable Income/ Other Income & Benefits**  
(Income not reported in your 1040)

Social Security benefits: \$ \_\_\_\_\_ Housing & other living allowance: \$ \_\_\_\_\_  
Child Support: \$ \_\_\_\_\_ Other non-taxable income: \$ \_\_\_\_\_  
Workers Compensation: \$ \_\_\_\_\_ **TOTAL: \$ \_\_\_\_\_**

## Final Authorization

Please initial below that you understand the following tuition assistance policy related to the tuition assistance application:

\_\_\_\_\_ RCS has the right to deny Tuition Assistance until all sources of income are verified, whether or not one or both of the parents are participating in the payment of tuition

\_\_\_\_\_ For Tuition Assistance applicants who do not file income tax, alternative verification of income will be required.

\_\_\_\_\_ Tuition Assistance is based on both parents' or guardians' income, regardless of marital status. Documentation to be submitted with the application include the first and signature page of the personal income tax return (1040, or 1040A) listing both parents' income (unless if one or both are deceased). **All students listed as a family must be included on the 1040 as dependents in order to qualify for Tuition Assistance.** If student is listed on another 1040, we require the collection of that 1040 and calculate that as part of the family income. Both living parents (birth, adoptive, or step), if applicable, or both legal guardians, if applicable, will show income in this calculation.

By signing below, I certify that the above information is true and that all income is reported. Unreported income may result in denial of tuition assistance.

\_\_\_\_\_  
Parent 1 Signature                      Date

\_\_\_\_\_  
Parent 2 Signature                      Date

# Rehoboth Christian School

## 2020-2021 School Board Members

---

Rehoboth Christian School is governed by the Rehoboth Christian School Board of Trustees which is commonly referred to as the Rehoboth Christian School Board. The Board is made up of current parents, former parents and alumni who have a passion for the mission of Rehoboth Christian School. Board members not only promote and protect the mission of the school but they are also liaisons to the communities from which our families come. These areas are called districts. Communication between the school and the parents can sometimes go through district meetings which will be held in the communities electronic/mail communication that will be shared. The Board members will also try to promote Rehoboth in their districts so that others will know about the accessibility of Rehoboth Christian education for those who are interested.

Included below is the 2020-21 Board of Trustees and their Rehoboth email address. In the next month you will receive more information about the districts. You will find out what district you are in and who will be your board representatives.

<b>CHRIS VICENTE</b> President	<a href="mailto:chrisvicente@rcsnm.org">chrisvicente@rcsnm.org</a>
<b>JAMES RICH</b> Vice-President	<a href="mailto:jamesrich@rcsnm.org">jamesrich@rcsnm.org</a>
<b>ERIC BEGAY</b> Treasurer	<a href="mailto:ericbegay@rcsnm.org">ericbegay@rcsnm.org</a>
<b>LAWRENCE ANDRADE</b> Secretary	<a href="mailto:landrade@rcsnm.org">landrade@rcsnm.org</a>
<b>MICHELLE SANCHEZ</b>	<a href="mailto:msanchez@rcsnm.org">msanchez@rcsnm.org</a>
<b>VALARIE LIVINGSTON</b>	<a href="mailto:valariejones@rcsnm.org">valariejones@rcsnm.org</a>
<b>GENEVIEVE WHITE</b>	<a href="mailto:gwhite@rcsnm.org">gwhite@rcsnm.org</a>
<b>FABIAN HEREDIA</b>	<a href="mailto:fheredia@rcsnm.org">fheredia@rcsnm.org</a>
<b>ANGELA KIEN</b>	<a href="mailto:angelakien@rcsnm.org">angelakien@rcsnm.org</a>
<b>TABITHA MANUELITO</b>	<a href="mailto:tabithamanuelito@rcsnm.org">tabithamanuelito@rcsnm.org</a>
<b>VONDA CLAW</b>	<a href="mailto:vondaclaw@rcsnm.org">vondaclaw@rcsnm.org</a>
<b>KRIS PIKAART</b>	<a href="mailto:krispikaart@rcsnm.org">krispikaart@rcsnm.org</a>
<b>YVONNE MURPHY</b>	<a href="mailto:yvonnemurphy@rcsnm.org">yvonnemurphy@rcsnm.org</a>

[Table of Contents](#)

# New Staff Profiles

---

## **Abbie Huizinga**

### **Rehoboth Elementary and Middle School Special Education Teacher**

Hi, my name is Abbie Huizinga. I am so excited to be joining the Rehoboth staff (again) as the new special education teacher for grades K-8. My history with Rehoboth started as a Calvin College student when I studied at Rehoboth for a semester. I fell in love with the area, landscapes, culture and people. My husband, Chris, and I moved to Rehoboth 12 years ago when he taught middle school science and I worked as Campus Hostess for a time. Chris and I have 4 kids, Grace, Anna, Audrey and Eddie, all of whom are (or were) Rehoboth students. Grace just graduated from Rehoboth and will be attending Calvin University this fall, Anna will be a Junior, Audrey in 8th grade and Eddie in 5th grade.

Previous to this year, I have been working as a special education teacher for the Gallup McKinley County School District at Catherine A. Miller Elementary School in the village of Church Rock. Although it has been extremely difficult leaving the position I have loved at CME, I look so forward to working with the students and families of Rehoboth, which has been my home for so long now. I am so excited to be a part of the Rehoboth staff where I pray God will utilize my gifts and abilities to serve the Rehoboth students and families well, and in doing so bring honor and glory to Him.

## **Sara Bingley**

### **Rehoboth Early Childhood Center Pre K Lead Teacher**

A year ago, my family and I relocated back to the Gallup area, but I grew up the majority of my life on the Navajo Reservation. I am originally from Bahast'lah (Twin Lakes), New Mexico and my clans are Sleeping Rock People born for the Red House People. I graduated Valedictorian from Tohatchi High School; and as a Dine' woman, I knew how important it was to continue my education. After high school, I attended New Mexico Military Institute (NMMI) in Roswell, New Mexico, and graduated with an Associates Degree. Soon after, I began to date my now-husband Dalray, who was Active Duty Military at the time and stationed in Ft. Hood, Texas. Not long after dating we were married and the Army relocated us to Ft. Bliss, Texas. Education has always been a big factor in my life, so I continued and successfully graduated with my Bachelor's Degree from New Mexico State University (NMSU).

Being a mother of a 6-year-old and a 3 year, I decided to work as a substitute teacher for Gallup McKinley County Schools as well as Rehoboth Christian School. During this time, I have experienced a lot of spiritual, mental, and overall personal growth. My time as an educator has been one of the most amazing experiences and I have loved and enjoyed every aspect of it. I truly believe that this opportunity was God-led and I am so thankful and blessed to become a part of the Rehoboth Christian School family. Thank you all for the warm welcome. I am looking forward to what God has in store for the upcoming school year.

## **Jamie Frederiksen**

### **Title 1 Elementary Reading**

Although I was born and I started my life in Michigan and have lived in many cities and countries in the past numerous years, my true home is New Mexico. At the age of 12 my family moved to Rehoboth and I attended Rehoboth from 1998-2003. After high school I continued on to Colorado Christian University to pursue a degree in Psychology. Relationships and community have been an integral part of my life, many thanks to the impact of the relationships that I built through the Rehoboth community as an adolescent, leading me to study more about the human psyche. I have always found listening and understanding people to be a passion of mine and studying

[Table of Contents](#)

psychology helped me to continue to learn about and invest in people. During this time I began to date my now-husband, Phil. We married after our third year in college and wasted no time in traveling overseas together. We both knew that we wanted to see more of the world and moved to South East Asia. We completed a TEFL course in Thailand and were fortunate enough to land teaching jobs in Vietnam. Our two oldest children, Chloe and Simon, were born there. The three years teaching in Vietnam, together with the impact of two amazing educators as parents, made me realize that I also wanted to be an educator.

We returned to New Mexico so that Phil could get his masters in education. During this time our third child, Lucas, was born. Living in such a close-knit community continued to stoke my passion for education and solidified for Phil and I that Gallup and Rehoboth would always be home for us. With that in mind, after five years back in the USA, we felt God call us to embark on a new adventure overseas. We both got teaching assignments in the Czech Republic at Riverside International School Prague where we have lived for the past four years. God has been faithful in all our adventures and the many paths He has led us on, and His timing is always perfect. During these past four years we have grown in immeasurable ways. We thank God for the doors He has opened and the many ways He has continued to teach us about different cultures and people groups. Throughout our time here in Prague, our hearts have continued to be connected to New Mexico and the yearning to go home continued to grow stronger.

Our family is excited to move back home and rejoin the Rehoboth community and I am eager to be joining the amazing Rehoboth staff. We are looking forward to reintegrating into an incomparable community that already has a piece of our hearts.

## **Daniel Ensign**

### **Elementary and Middle School Counselor, Rehoboth Elementary and Middle School**

I've lived in the Gallup/Window Rock area for the last 8 years and currently live in Bread Springs with my wife (Heather), my 1 yr old son (Arlo), and baby #2 due in November. Heather and I met in Ft. Defiance while I was working for Rez Refuge Ministries, and have been married since 2015.

I graduated from Trinity International University in 2012 with a Bachelor's degree in Biblical Studies and Capella University in 2018 with a Master's in Mental Health Counseling. I absolutely love being a counselor and find great purpose in walking with people through hurt and struggles, while also encouraging them to learn emotional literacy and self-efficacy.

In my free time, I enjoy hiking around our beautiful state of New Mexico, often hauling my camera with me to try and capture some of that beauty through photography. I am also an avid reader, constantly picking my way through a book.

Joining the staff at Rehoboth Christian School was as God-led as it was when I first felt led to pack up my car and move here from across the country in 2012. Over the last eight years I have met several individuals associated with Rehoboth in one way or another, and now I join a staff where I already have friends. I am excited to spread my roots and join Rehoboth Christian School in their mission to serve this community in one of the most overtly holistic approaches I've had the privilege to interact with. Thank you for the warm welcome of me and my family!

## **Elsa Doornbos**

### **Rehoboth Early Childhood Center Early Pr-eK Lead Teacher**

My name is Elsa Doornbos. I am the lead teacher in the Early Pre-K classroom. I am from Grandville Michigan, but this will be my second year in New Mexico. I was a long-term volunteer for the pre k program last year and loved every minute of it. This will be my first year teaching at Rehoboth Christian School in the Early Childhood center.

I attended and received my Associates degree of applied sciences in Early Childhood Education from North Central Michigan College in 2016. I am currently attending and taking classes for my bachelor's degree in Early Childhood education at New Mexico State University.

I absolutely love how the staff at Rehoboth Christian school feels like a family. I love that I know that If I have a problem, I can go to anyone on staff, and I can trust them to help me find a way to solve it. I also love that I can go to staff with prayer requests, and they will pray for me. I am excited to work with all of them this year.

I love walking into my classroom every morning and seeing the smiling faces of my students. I love knowing that I will be playing a part in their amazing life's story. I can not wait to see the different personalities of all the students in my classroom this year.  
When I am not teaching, I enjoy going for hikes in the mountains, exploring new places, painting, drawling, and singing. I also love to video chat with my family and friends.

## **Darrrren Yazzie**

### **Educational Assistant, Rehoboth Early Childhood Center, Pre K**

My name is Darren Yazzie and I most recently worked for Explora out of their Gallup office. I graduated from Central Arizona College. After serving in the military, I studied Education at UNM in Albuquerque. I am excited about encouraging students to use their imaginations and watch their minds develop. I also am encouraged to know some of the Rehoboth staff already because I have worked with them in the past.

# Important School Numbers

PO Box 41, Rehoboth, NM 87322  
211 Tse Yaaniichii Street  
F: 505.726.9635

**Main: 505.863.4412**

Late Start & Cancellation (snow delay info)		505.726.9642
Elementary/Middle School office (Val Peywa)	x175	505.726.9675
Elementary & Middle School Principal (Peter Ippel)	x110	505. 726.9605
High School office (Camilla Lynch)	x132	505.726.9632
High School Principal (Dan Meester)	x131	505.726.9631
Food Service Director (Sue Eddy)	x116	505.726.9616
Meal Payments (Darlene Stewart)	x108	505.726.9608
Transportation Director (Jonathon Terborg)	x122	505.726.9622
Athletic Director (Adrian Pete)	x129	505.729.9629
Chaplain (Kevin Ruthven)	x203	505.726.9632
Administration - Front Desk (Dorann Louis)	x135/0	
505.726.9635		
Admissions Director (Verlena Livingston)	x192	505.726.9692
Director of Finance (Perscilla Brink)	x204	505.726.9704
Executive Director (Bob Ippel)	x123	505.726.9623



[Table of Contents](#)

# **Parent Back-To-School Checkoff list**

---

- ☐ Sign family Tuition Contract and return to Administration building (will need to be turned in before your child begins the school year)
- ☐ If paying through FACTS, set-up your monthly payment schedule as soon as possible (it's free!)
- ☐ Have the first tuition payment paid in the admin. bldg. by the 1st day of school, if not signed up for FACTS
- ☐ Have parent/guardians and child(ren) attend Family Orientation
- ☐ Stop by Transportation & Lunch program information booth during Family Orientation
- ☐ Submit updated immunization record to Admissions office
- ☐ Free & Reduced meal application returned to Administration building
- ☐ Be sure to update any contact information especially phone numbers and emails.
- ☐ Follow us on Facebook & Instagram