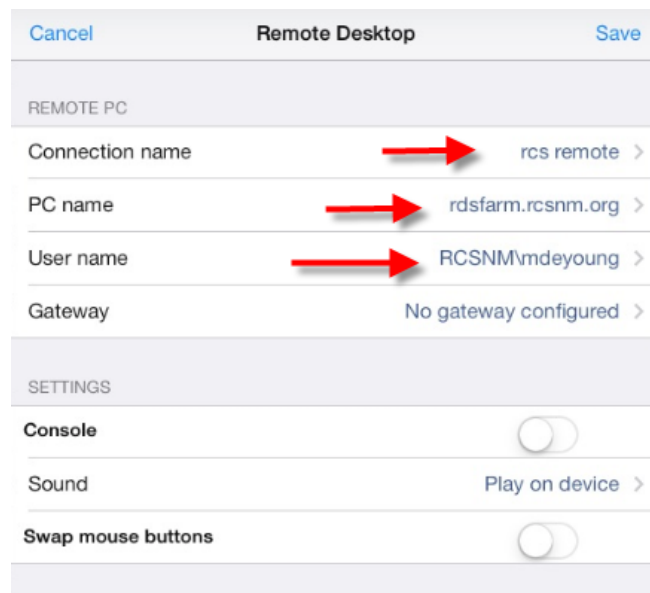


iPad App for accessing a RCS account

If you own a Macbook laptop or iPad and you want to use it to access your school account, you first need to install a remote desktop application. One that seems to work well is an app called Microsoft Remote Desktop. It looks like this in the Apps Store.



After downloading and installing the app you will need to configure it to connect to your account on the Rehoboth network. Begin by giving this connection a name (like RCS remote, or School connection, etc., or whatever you want to call it.) The configuration for your new remote connection should look like this:



Next, go to the Remote Resources and put in the information for the school's remote portal webpage. Type the website shown below into the URL section and again include your school account username and current account password.

<https://rdsfarm.rcsnm.org/rdweb>

When finished the Remote Resources configuration page will look like below and then all the applications you are allowed to use will show on the screen similar to what you get when you login remotely using a laptop and the RDWeb link.

