

## RCSNM User:

To work with the new RDS web portal connection if you are using a desktop machine inside or outside the network, you need to make these configuration changes. From my testing on my laptop it appears to hold once the changes are made.

- First of all, open your Internet Explorer web browser and type in this URL input of <https://rdsfarm.rcsnm.org/RDWeb>
- The login page opens with

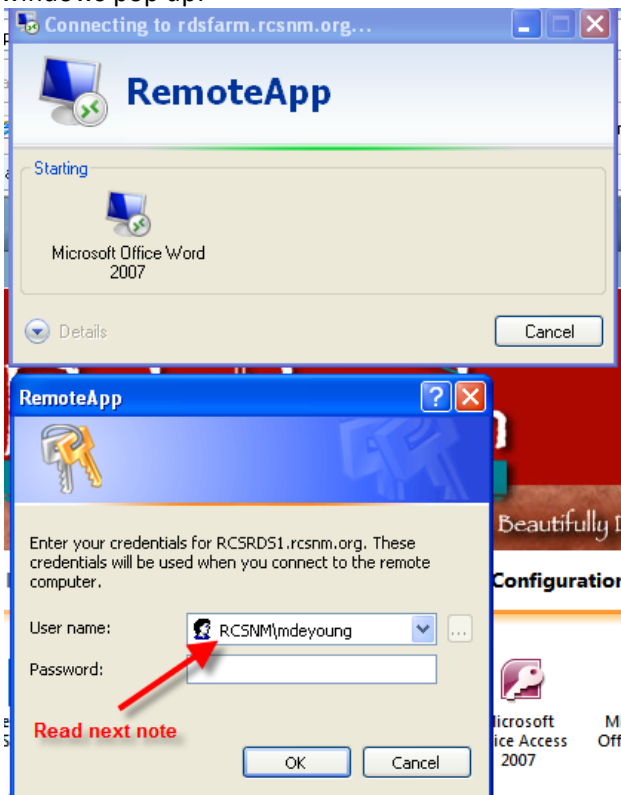
Domain\user name:   
Password:

Security ([show explanation](#))

This is a public or shared computer

This is a private computer

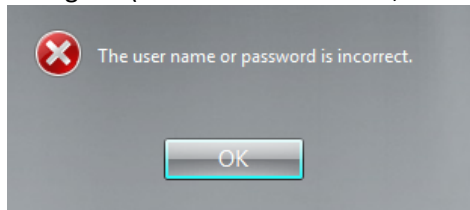
- Type in your username behind the RCSNM\ and your password.
- The next page shows all the published apps (If you are still using Windows XP you need to install the ActiveX plugin. You will see this notice flashing near the top of your webpage asking you if you want to install the plugin. Do it!)
- Once the apps appear click on the icon you want to start. Then you will see the following windows pop up:



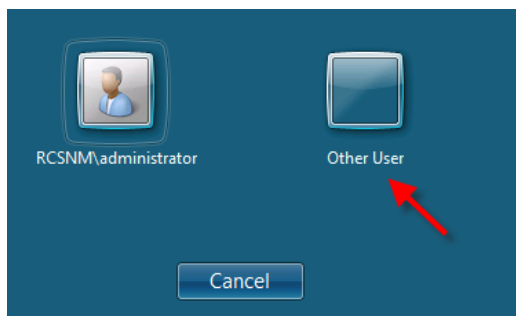
- Type in your password again, but the domain should still be RCSNM\.
- If nothing appears to be happening, click on details.



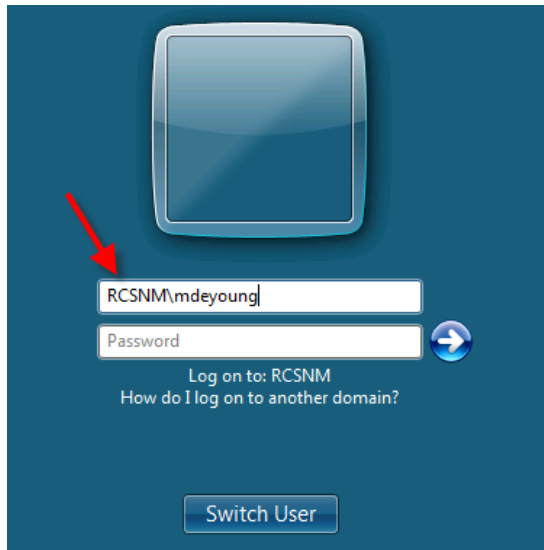
- Here is where you might experience a problem. The first time you do this the domain might show the name of your local computer or RCRDS1\. What you need to do is change this to the RCSNM\ domain name again, and enter your username and password again. (I know this is a hassle, but it should be the only time you need to do this.)



- Click the ok and this screen should appear:



- Select "other user" and type in the RCSNM\ domain again like below.



- After that you should be good to go. If you click on other icons it should go right to the app and not make you do all these extra steps.

I know this is a pain, but once it is all set up the configurations should stick and things should run a lot easier.