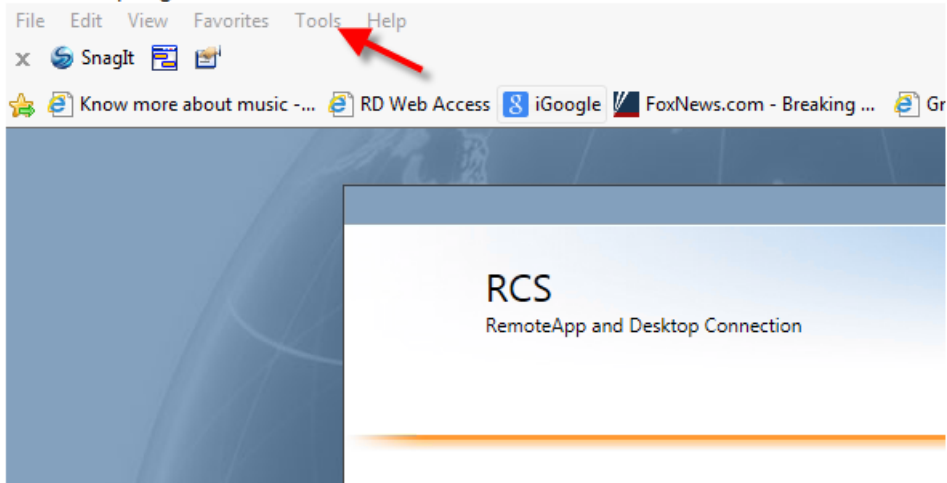


## Configuring Internet Explorer 11 to work with RD Web Access.

If you have IE 11 installed as your web browser and a message comes up saying RD Web Access is not compatible and you need to upgrade your Internet Explorer after you log into your account, you will need to make the following configuration changes to your Internet Explorer.

- Once IE is open go to Tools.



- Drop down on Tools and select "Compatibility View Settings". Type rcsnm.org in the Add this website. Click "add" so this appears in the bottom box. Then select close. That's it! You should be good to go.

